

IEEE TRANSACTIONS ON INFORMATION TECHNOLOGY IN BIOMEDICINE

A PUBLICATION OF THE IEEE ENGINEERING IN MEDICINE AND BIOLOGY SOCIETY



TECHNICALLY COSPONSORED BY THE IEEE COMPUTER SOCIETY



Indexed in PubMed® and MEDLINE®, products of the United States National Library of Medicine



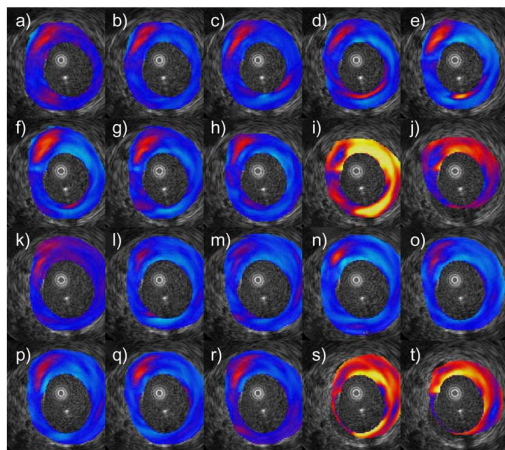
MAY 2008

VOLUME 12

NUMBER 3

ITIBFX

(ISSN 1089-7771)



(a)–(t) Radial strain elastograms computed for two CCs over the rabbit’s abdominal aorta with the LSME. In this configuration, positive strain values displayed in blue are associated with tissue dilation, whereas negative strains displayed in red and yellow are indicative of tissue compression. For the purpose of illustration, the colormap was normalized in a range of $[-2.5$ to $2]$ %. The CCC, plotted at the bottom of this figure, traces the different moments (systole/diastole) of the CC. As shown in “Characterization of Atherosclerotic Plaques and Mural Thrombi With Intravascular Ultrasound Elastography: A Potential Method Evaluated in an Aortic Rabbit Model and a Human Coronary Artery” by R. L. Maurice, J. Fromageau, M.-H. R. Cardinal, M. Doyley, E. de Muinck, J. Robb, and G. Cloutier on page 294.